

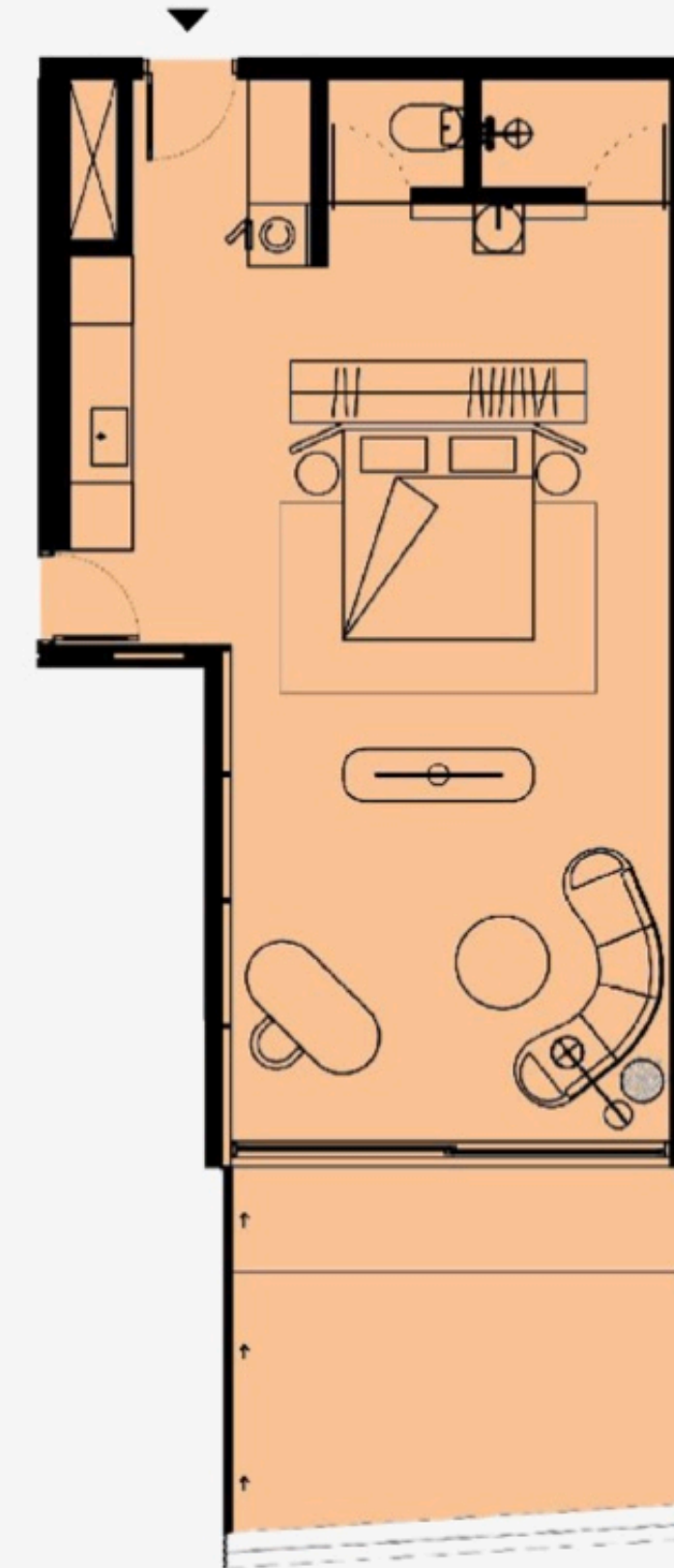
102

Deluxe Garden *Studio*

65 SQM

| | |
|----------|-----------------|
| Bedroom | 5.30 m x 8.50 m |
| Bathroom | 1.80 m x 3.30 m |
| Terrace | 4.30 m x 3.30 m |

* plans are subject to change



FIRST FLOOR

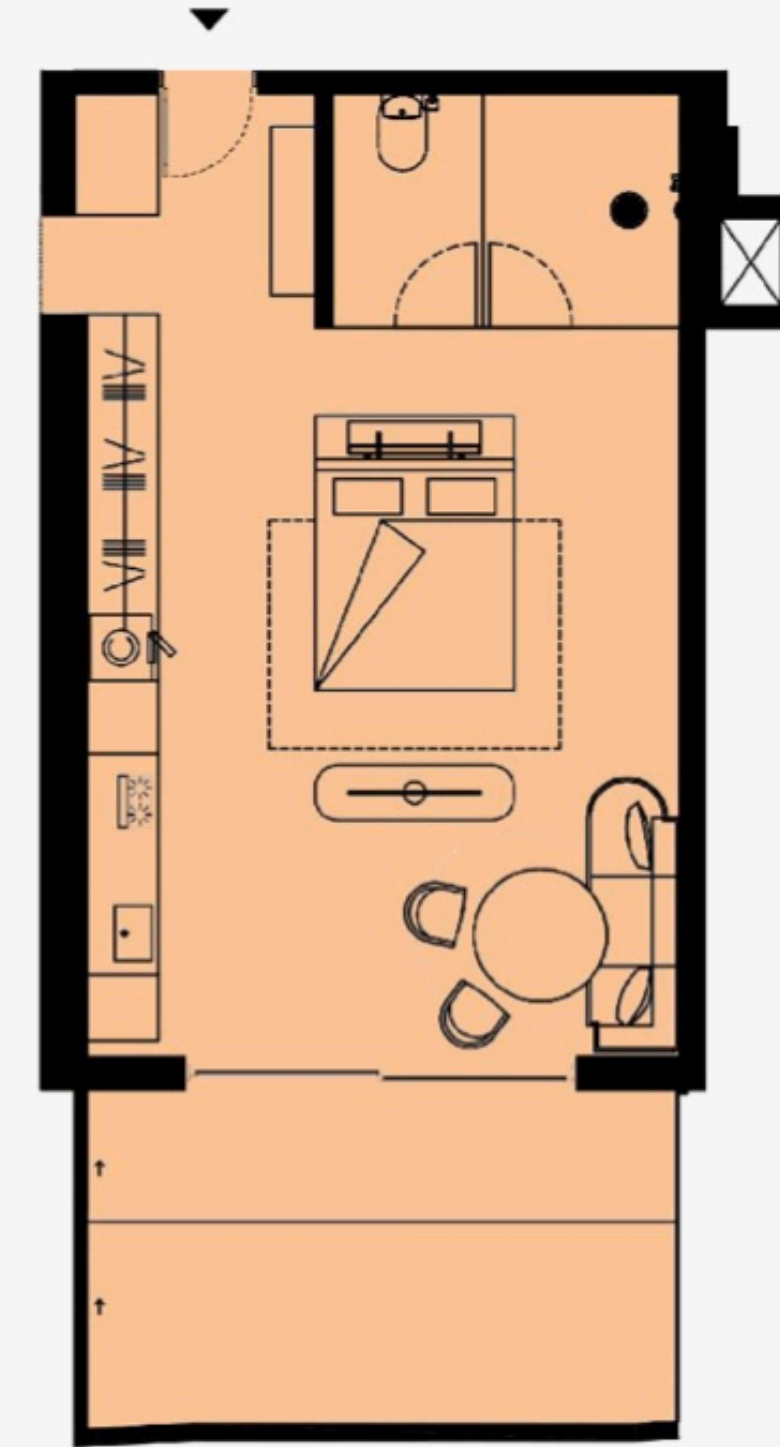
105

Deluxe Garden *Studio*

71 SQM

| | |
|----------|-----------------|
| Bedroom | 5.50 m x 7.80 m |
| Bathroom | 3.20 m x 2.10 m |
| Terrace | 5.60 m x 3.75 m |

* plans are subject to change



AVAILABLE UNITS

| PLOT # | RESIDENCE # | CATEGORY | RESIDENCE TYPE | STATUS | FLOOR | TOTAL SIZE M ² | OUTDOOR SPACE | INDOOR AREA M ² | OUTDOOR AREA M ² | SALE PRICE |
|--------|-------------|----------|------------------------|------------------|--------|---------------------------|---------------|----------------------------|-----------------------------|------------|
| 1 | 101 | One Bed | Delux One Bedroom Pool | <i>Available</i> | First | 103 | Pool & Garden | 73.48 | 29.52 | \$330,000 |
| 2 | 102 | Studio | Delux Garden Studio | <i>Available</i> | First | 65 | Garden | 50.81 | 14.19 | \$330,000 |
| 3 | 103 | One Bed | Delux One Bedroom Pool | <i>Available</i> | First | 110 | Pool & Garden | 75.04 | 34.96 | \$475,000 |
| 4 | 104 | One Bed | Delux One Bedroom Pool | <i>Available</i> | First | 103 | Pool & Garden | 67.36 | 35.64 | \$475,000 |
| 5 | 105 | Studio | Delux Garden Studio | <i>Available</i> | First | 71 | Garden | 50 | 21 | \$330,000 |
| 6 | 201 | One Bed | One Bedroom Panaromic | <i>Available</i> | Second | 100 | Balcony | 73.4 | 26.6 | \$475,000 |
| 8 | 202 | Studio | Studio Panaromic | <i>Available</i> | Second | 63.3 | Balcony | 54.48 | 8.82 | \$330,000 |
| 10 | 203 | One Bed | One Bedroom Panaromic | <i>Available</i> | Second | 70 | Balcony | 61.18 | 8.82 | \$475,000 |
| 12 | 204 | One Bed | One Bedroom Panaromic | <i>Available</i> | Second | 70 | Balcony | 61.18 | 8.82 | \$300,000 |
| 14 | 205 | One Bed | One Bedroom Panaromic | <i>Available</i> | Second | 98 | Balcony | 74.9 | 23.1 | \$475,000 |
| 16 | 206 | One Bed | One Bedroom Panaromic | <i>Available</i> | Second | 100 | Balcony | 75.4 | 24.6 | \$330,000 |
| 18 | 207 | One Bed | One Bedroom Panaromic | <i>Available</i> | Second | 91 | Balcony | 78.68 | 12.32 | \$475,000 |

AVAILABLE UNITS

| PLOT # | RESIDENCE # | CATEGORY | RESIDENCE TYPE | STATUS | FLOOR | TOTAL SIZE M ² | OUTDOOR SPACE | INDOOR AREA M ² | OUTDOOR AREA M ² | SALE PRICE |
|--------|-------------|----------|-----------------------|------------------|--------|---------------------------|---------------|----------------------------|-----------------------------|------------|
| 20 | 208 | Studio | Studio Panaromic | <i>Available</i> | Second | 64 | Balcony | 36.26 | 27.74 | \$330,000 |
| 22 | 209 | One Bed | One Bedroom Panaromic | <i>Available</i> | Second | 81 | Balcony | 71.2 | 9.8 | \$475,000 |
| 7 | 301 | One Bed | One Bedroom Panaromic | <i>Available</i> | Third | 100 | Balcony | 73.4 | 26.6 | \$475,000 |
| 9 | 302 | Studio | Studio Panaromic | <i>Available</i> | Third | 63.3 | Balcony | 54.48 | 8.82 | \$330,000 |
| 11 | 303 | One Bed | One Bedroom Panaromic | <i>Available</i> | Third | 70 | Balcony | 61.18 | 8.82 | \$475,000 |
| 13 | 304 | One Bed | One Bedroom Panaromic | <i>Available</i> | Third | 70 | Balcony | 61.18 | 8.82 | \$330,000 |
| 15 | 305 | One Bed | One Bedroom Panaromic | <i>Available</i> | Third | 98 | Balcony | 74.9 | 23.1 | \$475,000 |
| 17 | 306 | One Bed | One Bedroom Panaromic | <i>Available</i> | Third | 100 | Balcony | 75.4 | 24.6 | \$330,000 |
| 19 | 307 | One Bed | One Bedroom Panaromic | <i>Available</i> | Third | 91 | Balcony | 78.68 | 12.32 | \$475,000 |
| 21 | 308 | Studio | Studio Panaromic | <i>Available</i> | Third | 64 | Balcony | 36.26 | 27.74 | \$330,000 |
| 23 | 309 | One Bed | One Bedroom Panaromic | <i>Available</i> | Third | 81 | Balcony | 71.2 | 9.8 | \$475,000 |