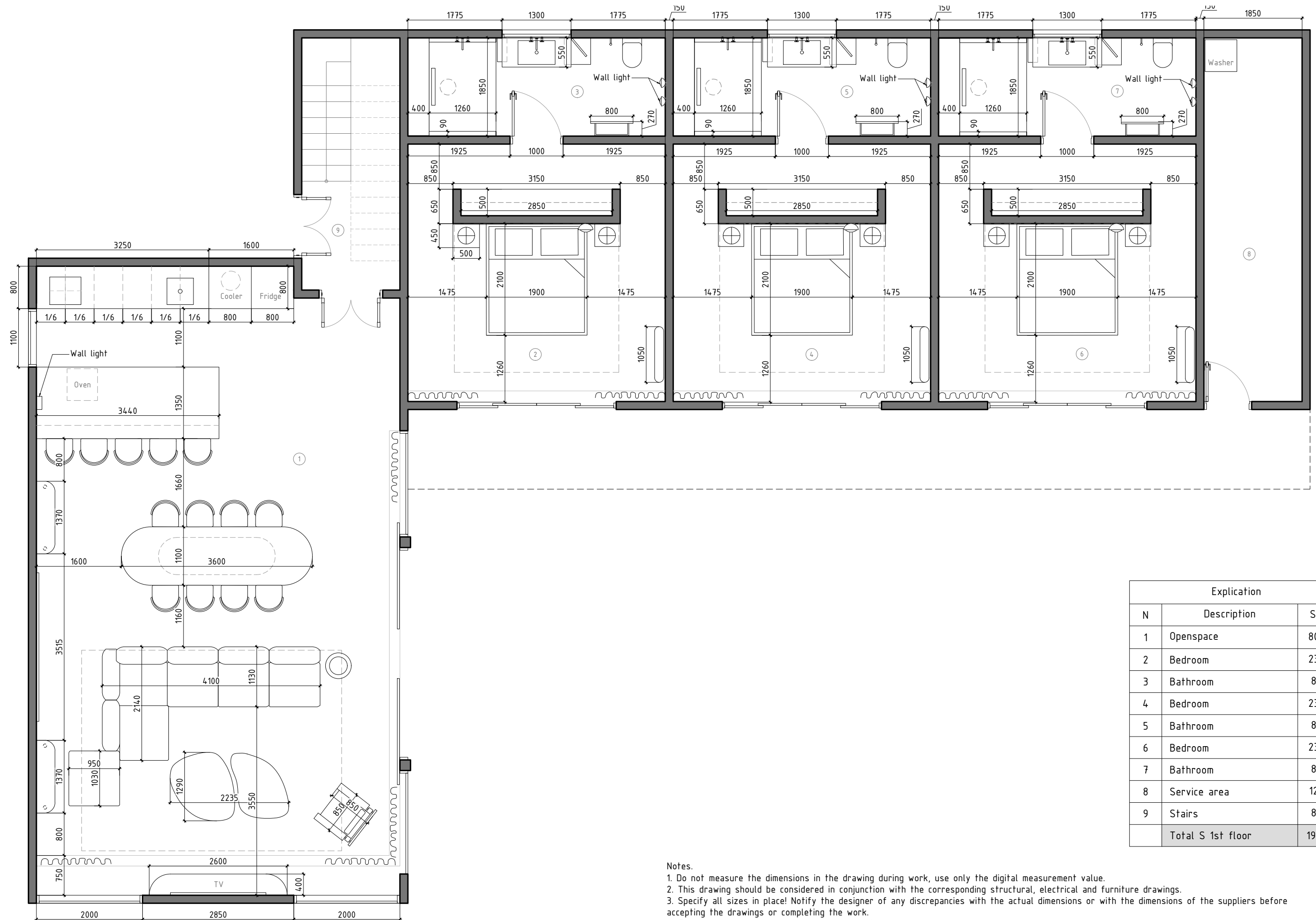


GD

Bali

List of drawings	
N	Description
1	List of drawings
2	Furniture plan 1st floor
3	Furniture plan 2nd floor
4	Plan with placement of sanitation equipment 1st floor
5	Plan with placement of sanitation equipment 2nd floor
6	Lighting equipment inclusion by group 1st floor
7	Lighting equipment inclusion by group 2nd floor
8	Electrical plan 1st floor
9	Electrical plan 2nd floor
10	Lighting equipment binding plan 1st floor
11	Lighting equipment binding plan 2nd floor

Architect	A.E. Lutaeva		Date
Architect	M.A.Mosievskaya	List of drawings	

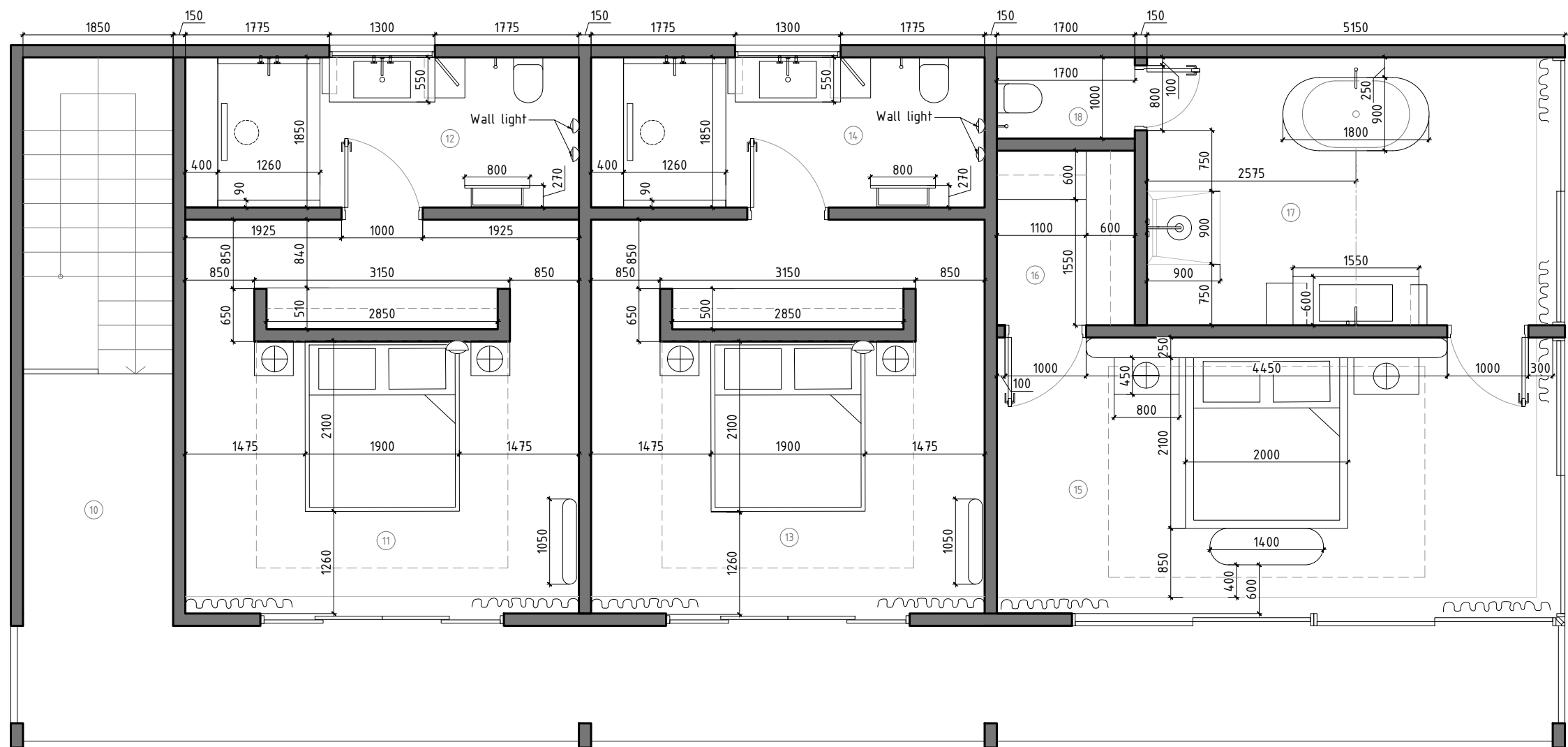


Explication		
N	Description	S,m2
1	Openspace	80,00
2	Bedroom	23,50
3	Bathroom	8,95
4	Bedroom	23,50
5	Bathroom	8,95
6	Bedroom	23,50
7	Bathroom	8,95
8	Service area	12,70
9	Stairs	8,80
Total S 1st floor		198.85

Notes.

- Do not measure the dimensions in the drawing during work, use only the digital measurement value.
- This drawing should be considered in conjunction with the corresponding structural, electrical and furniture drawings.
- Specify all sizes in place! Notify the designer of any discrepancies with the actual dimensions or with the dimensions of the suppliers before accepting the drawings or completing the work.
- The heights are indicated from the finished floor level.

Architect	A.E. Lutaeva		Date
Architect	M.A.Mosievskaya	Furniture plan 1st floor	

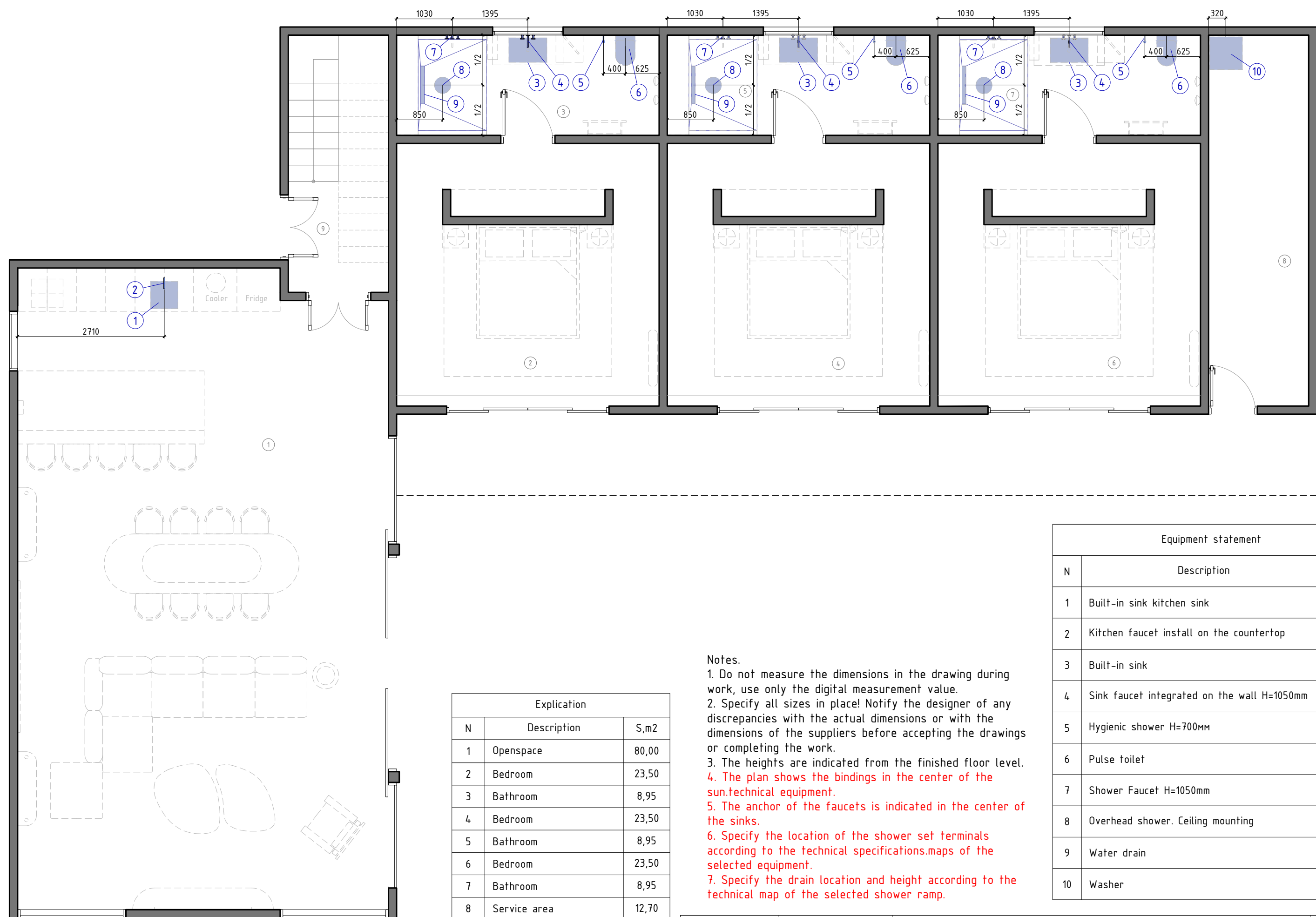


Explication		
N	Description	S,m2
10	Hall	32,30
11	Bedroom	23,50
12	Bathroom	8,95
13	Bedroom	23,50
14	Bathroom	8,95
15	Bedroom	23,15
16	Dressing room	3,65
17	Bathroom	16,50
18	Toilet	1,70
	Total S 2nd floor	142.20

Notes.

- Do not measure the dimensions in the drawing during work, use only the digital measurement value.
- This drawing should be considered in conjunction with the corresponding structural, electrical and furniture drawings.
- Specify all sizes in place! Notify the designer of any discrepancies with the actual dimensions or with the dimensions of the suppliers before accepting the drawings or completing the work.
- The heights are indicated from the finished floor level.

Architect	A.E. Lutaeva		Date
Architect	M.A.Mosievskaya	Furniture plan 2nd floor	



Notes.

1. Do not measure the dimensions in the drawing during work, use only the digital measurement value.

2. Specify all sizes in place! Notify the designer of any discrepancies with the actual dimensions or with the dimensions of the suppliers before accepting the drawings or completing the work.

3. The heights are indicated from the finished floor level.

4. The plan shows the bindings in the center of the sun.technical equipment.

5. The anchor of the faucets is indicated in the center of the sinks.

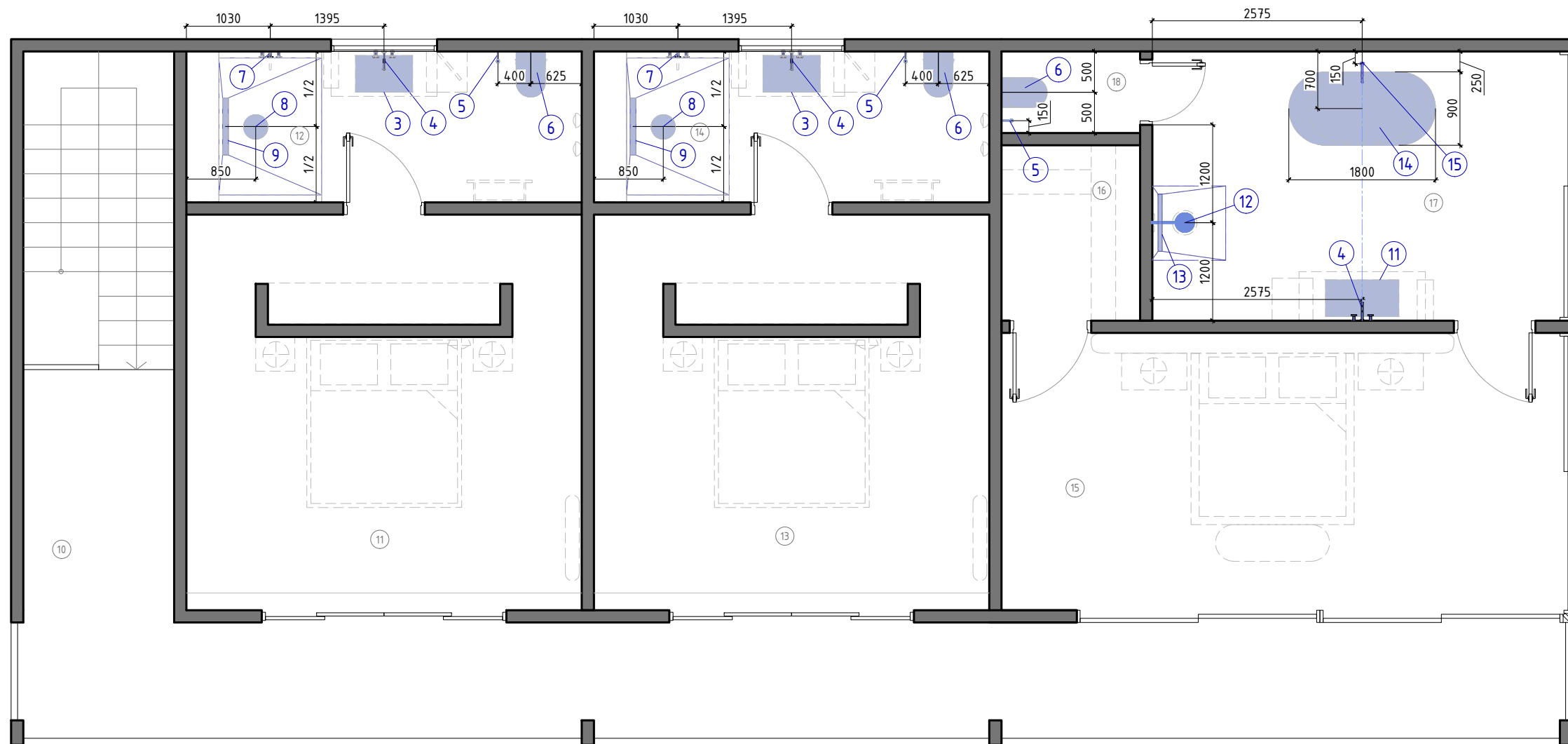
6. Specify the location of the shower set terminals according to the technical specifications.maps of the selected equipment.

7. Specify the drain location and height according to the technical map of the selected shower ramp.

Explication		
N	Description	S,m2
1	Openspace	80,00
2	Bedroom	23,50
3	Bathroom	8,95
4	Bedroom	23,50
5	Bathroom	8,95
6	Bedroom	23,50
7	Bathroom	8,95
8	Service area	12,70
9	Stairs	8,80
Total S 1st floor		198.85

Equipment statement		
N	Description	Quantity
1	Built-in sink kitchen sink	1
2	Kitchen faucet install on the countertop	1
3	Built-in sink	3
4	Sink faucet integrated on the wall H=1050mm	3
5	Hygienic shower H=700mm	3
6	Pulse toilet	3
7	Shower Faucet H=1050mm	3
8	Overhead shower. Ceiling mounting	3
9	Water drain	3
10	Washer	1

Architect	A.E. Lutaeva	Plan with placement of sanitation equipment 1st floor	Date
Architect	M.A.Mosievskaya		21.03.25



Explication		
N	Description	S,m2
10	Hall	32,30
11	Bedroom	23,50
12	Bathroom	8,95
13	Bedroom	23,50
14	Bathroom	8,95
15	Bedroom	23,15
16	Dressing room	3,65
17	Bathroom	16,50
18	Toilet	1,70
Total S 2nd floor		142.20

Notes.

1. Do not measure the dimensions in the drawing during work, use only the digital measurement value.

2. Specify all sizes in place! Notify the designer of any discrepancies with the actual dimensions or with the dimensions of the suppliers before accepting the drawings or completing the work.

3. The heights are indicated from the finished floor level.

4. The plan shows the bindings in the center of the sun.technical equipment.

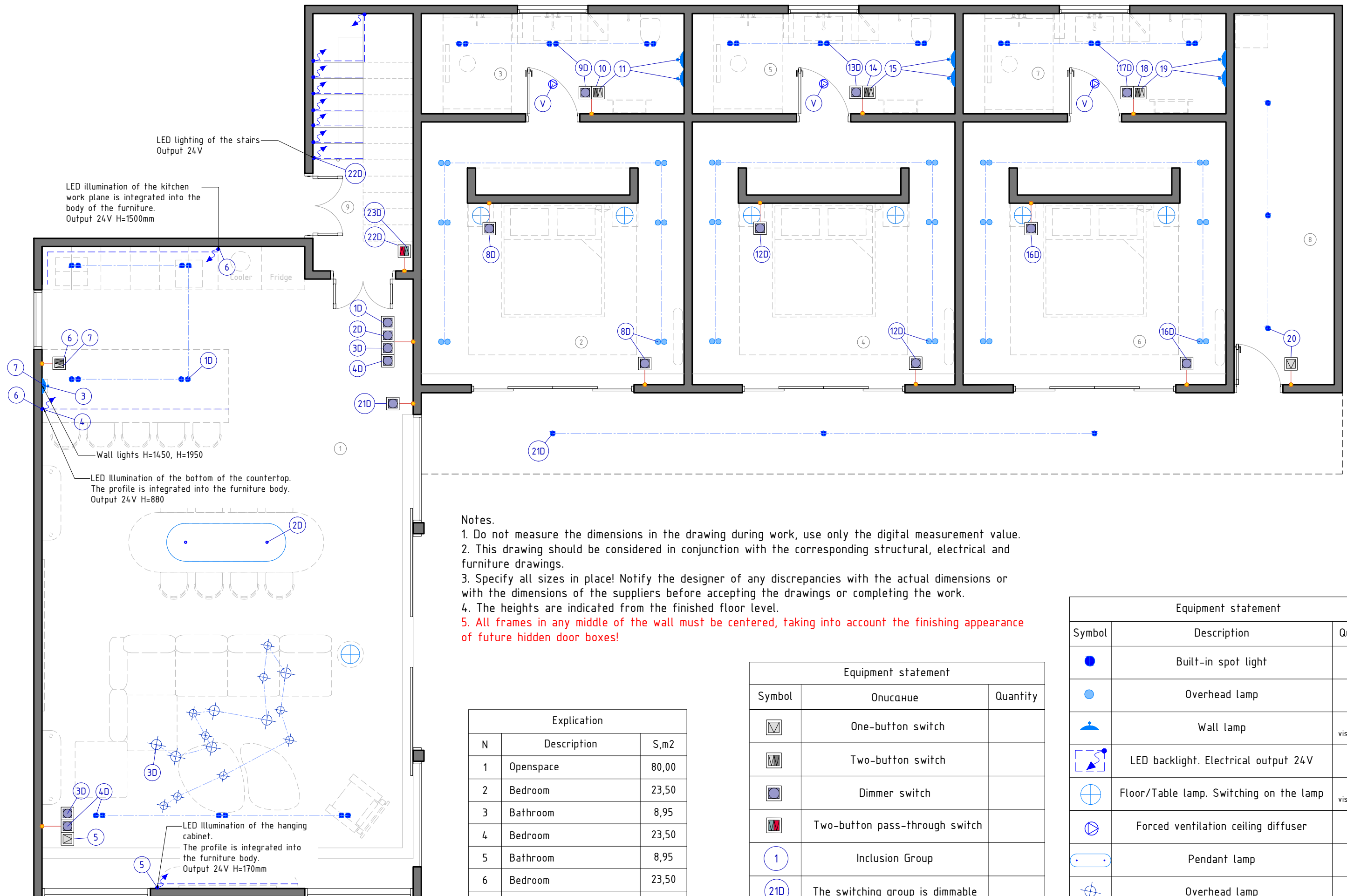
5. The anchor of the faucets is indicated in the center of the sinks.

6. Specify the location of the shower set terminals according to the technical specifications.maps of the selected equipment.

7. Specify the drain location and height according to the technical map of the selected shower ramp.

Equipment statement		
N	Description	Quantity
4	Sink faucet integrated on the wall H=1050mm	1
5	Hygienic shower H=700mm	3
6	Pulse toilet	3
7	Shower Faucet H=1050mm	3
8	Overhead shower. Ceiling mounting	3
9	Water drain	3
11	Built-in sink	1
12	Overhead shower-wall mounting, H=2250mm. Shower faucet. Mounting built-in. H=1050mm	1
13	Water drain	1
14	The bathtub is freestanding, draining the water according to the technical data sheet of the equipment inside the floor	1
15	pout for the bathtub. Water supply from the floor	Date

Architect	A.E. Lutaeva	
Architect	M.A.Mosievskaya	Plan with placement of sanitation equipment 2nd floor



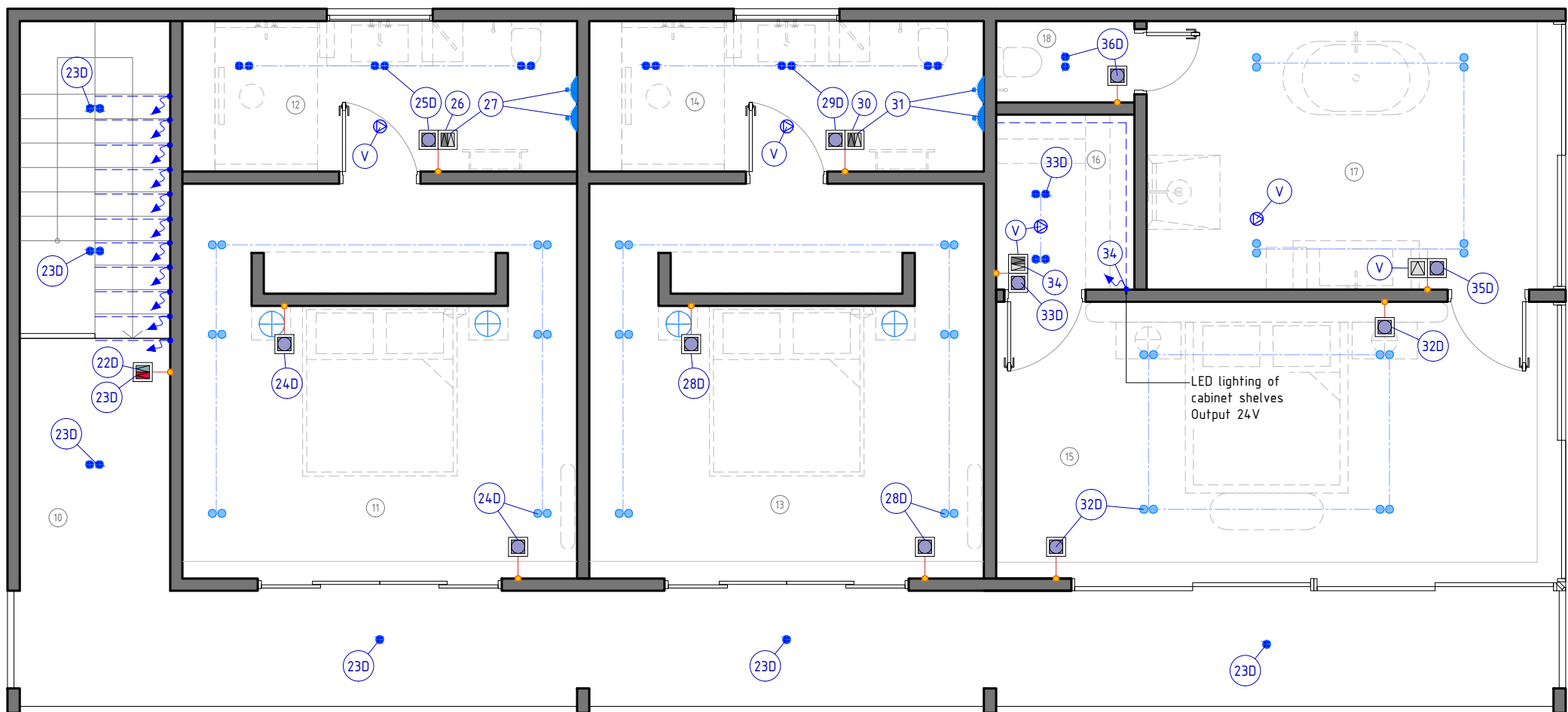
- Notes.
1. Do not measure the dimensions in the drawing during work, use only the digital measurement value.
 2. This drawing should be considered in conjunction with the corresponding structural, electrical and furniture drawings.
 3. Specify all sizes in place! Notify the designer of any discrepancies with the actual dimensions or with the dimensions of the suppliers before accepting the drawings or completing the work.
 4. The heights are indicated from the finished floor level.
 5. All frames in any middle of the wall must be centered, taking into account the finishing appearance of future hidden door boxes!

Explication		
N	Description	S,m2
1	Openspace	80,00
2	Bedroom	23,50
3	Bathroom	8,95
4	Bedroom	23,50
5	Bathroom	8,95
6	Bedroom	23,50
7	Bathroom	8,95
8	Service area	12,70
9	Stairs	8,80
Total S 1st floor		198.85

Equipment statement		
Symbol	Описание	Quantity
	One-button switch	
	Two-button switch	
	Dimmer switch	
	Two-button pass-through switch	
	Inclusion Group	
	The switching group is dimmable	

Equipment statement		
Symbol	Description	Quantity
	Built-in spot light	38
	Overhead lamp	36
	Wall lamp	By visualization
	LED backlight. Electrical output 24V	
	Floor/Table lamp. Switching on the lamp	By visualization
	Forced ventilation ceiling diffuser	3
	Pendant lamp	1
	Overhead lamp	15

Architect	A.E. Lutaeva		Date
Architect	M.A.Mosievskaya	Lighting equipment inclusion by group 1st floor	21.03.25



Explication		
N	Description	S,m2
10	Hall	32,30
11	Bedroom	23,50
12	Bathroom	8,95
13	Bedroom	23,50
14	Bathroom	8,95
15	Bedroom	23,15
16	Dressing room	3,65
17	Bathroom	16,50
18	Toilet	1,70
Total S 2nd floor		142.20

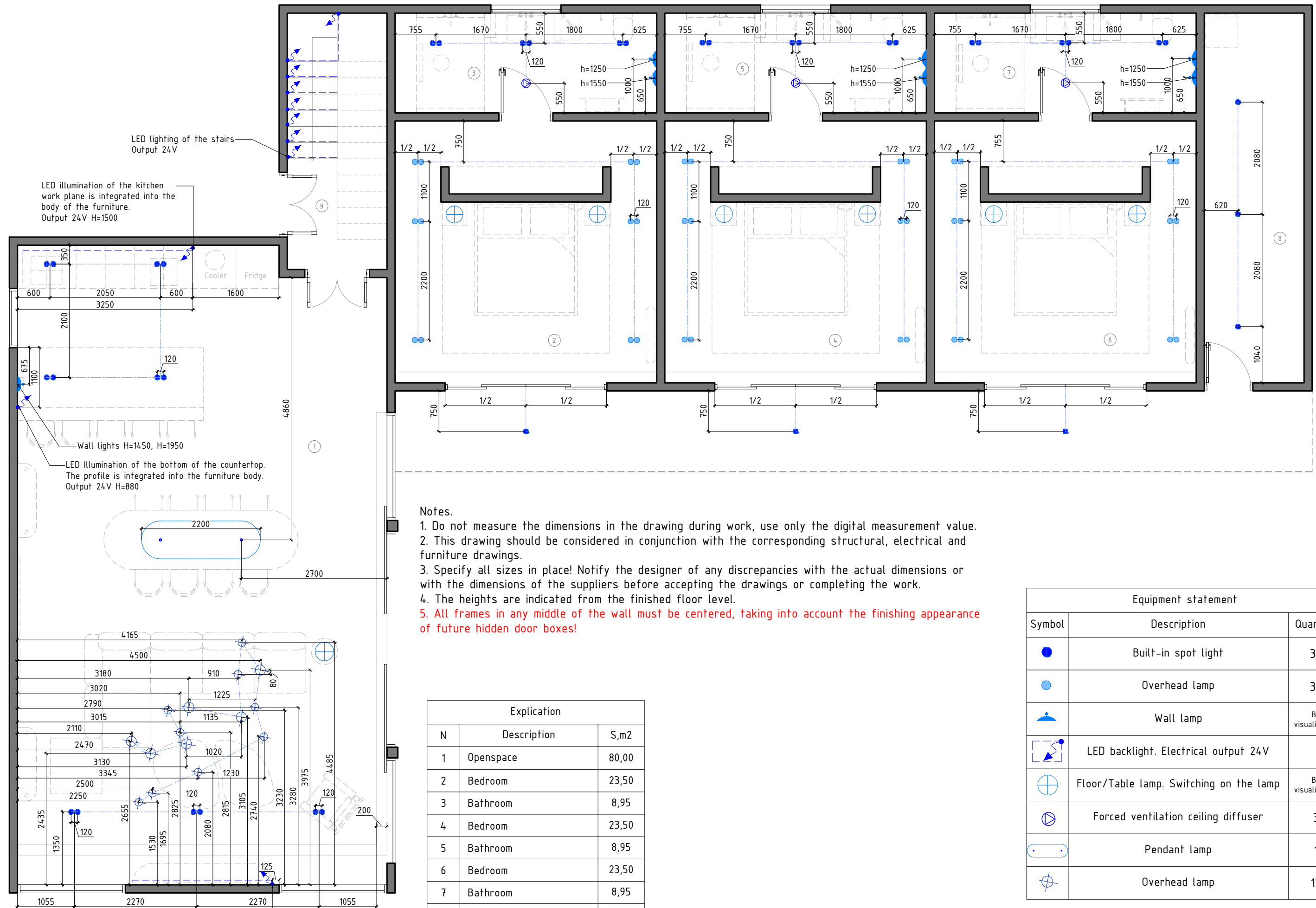
Notes.

- Do not measure the dimensions in the drawing during work, use only the digital measurement value.
- This drawing should be considered in conjunction with the corresponding structural, electrical and furniture drawings.
- Specify all sizes in place! Notify the designer of any discrepancies with the actual dimensions or with the dimensions of the suppliers before accepting the drawings or completing the work.
- The heights are indicated from the finished floor level.
- All frames in any middle of the wall must be centered, taking into account the finishing appearance of future hidden door boxes!

Equipment statement		
Symbol	Onucahue	Quantity
	One-button switch	
	Two-button switch	
	Dimmer switch	
	Two-button pass-through switch	
	Inclusion Group	
	The switching group is dimmable	

Equipment statement		
Symbol	Description	Quantity
	Built-in spot light	27
	Overhead lamp	36
	Wall lamp	By visualization
	LED backlight. Electrical output 24V	
	Floor/Table lamp. Switching on the lamp	By visualization
	Forced ventilation ceiling diffuser	4

Architect	A.E. Lutaeva		Date
Architect	M.A.Mosievskaya	Lighting equipment inclusion by group 2nd floor	



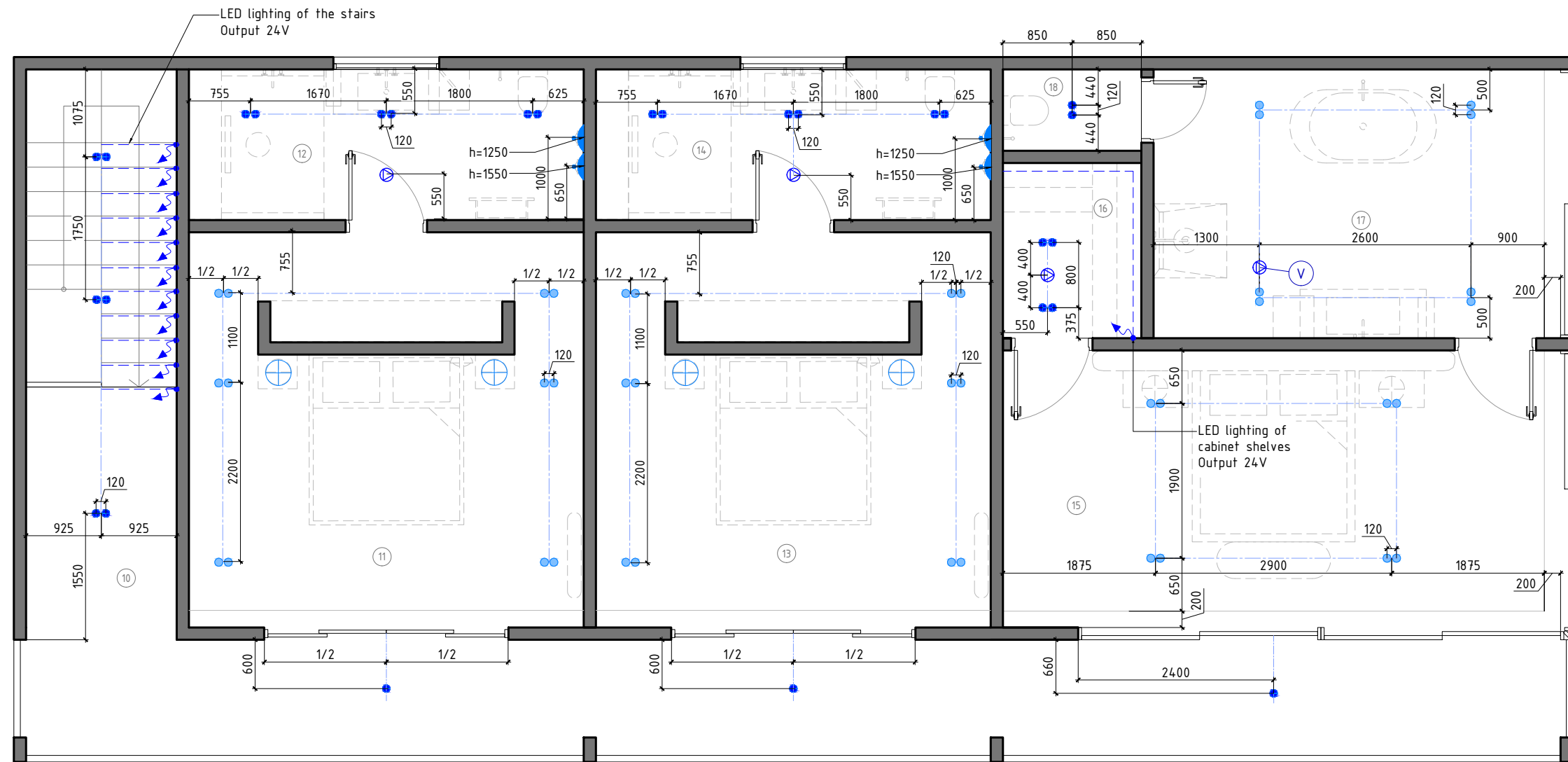
Notes.

1. Do not measure the dimensions in the drawing during work, use only the digital measurement value.
2. This drawing should be considered in conjunction with the corresponding structural, electrical and furniture drawings.
3. Specify all sizes in place! Notify the designer of any discrepancies with the actual dimensions or with the dimensions of the suppliers before accepting the drawings or completing the work.
4. The heights are indicated from the finished floor level.
5. All frames in any middle of the wall must be centered, taking into account the finishing appearance of future hidden door boxes!

Explication		
N	Description	S,m2
1	Openspace	80,00
2	Bedroom	23,50
3	Bathroom	8,95
4	Bedroom	23,50
5	Bathroom	8,95
6	Bedroom	23,50
7	Bathroom	8,95
8	Service area	12,70
9	Stairs	8,80
Total S 1st floor		198.85

Equipment statement		
Symbol	Description	Quantity
●	Built-in spot light	38
●	Overhead lamp	36
⌒	Wall lamp	By visualization
⌒	LED backlight. Electrical output 24V	
⊕	Floor/Table lamp. Switching on the lamp	By visualization
⊗	Forced ventilation ceiling diffuser	3
⌒	Pendant lamp	1
⊗	Overhead lamp	15

Architect	A.E. Lutaeva		Date
Architect	M.A.Mosievskaya	Lighting equipment binding plan 1st floor	



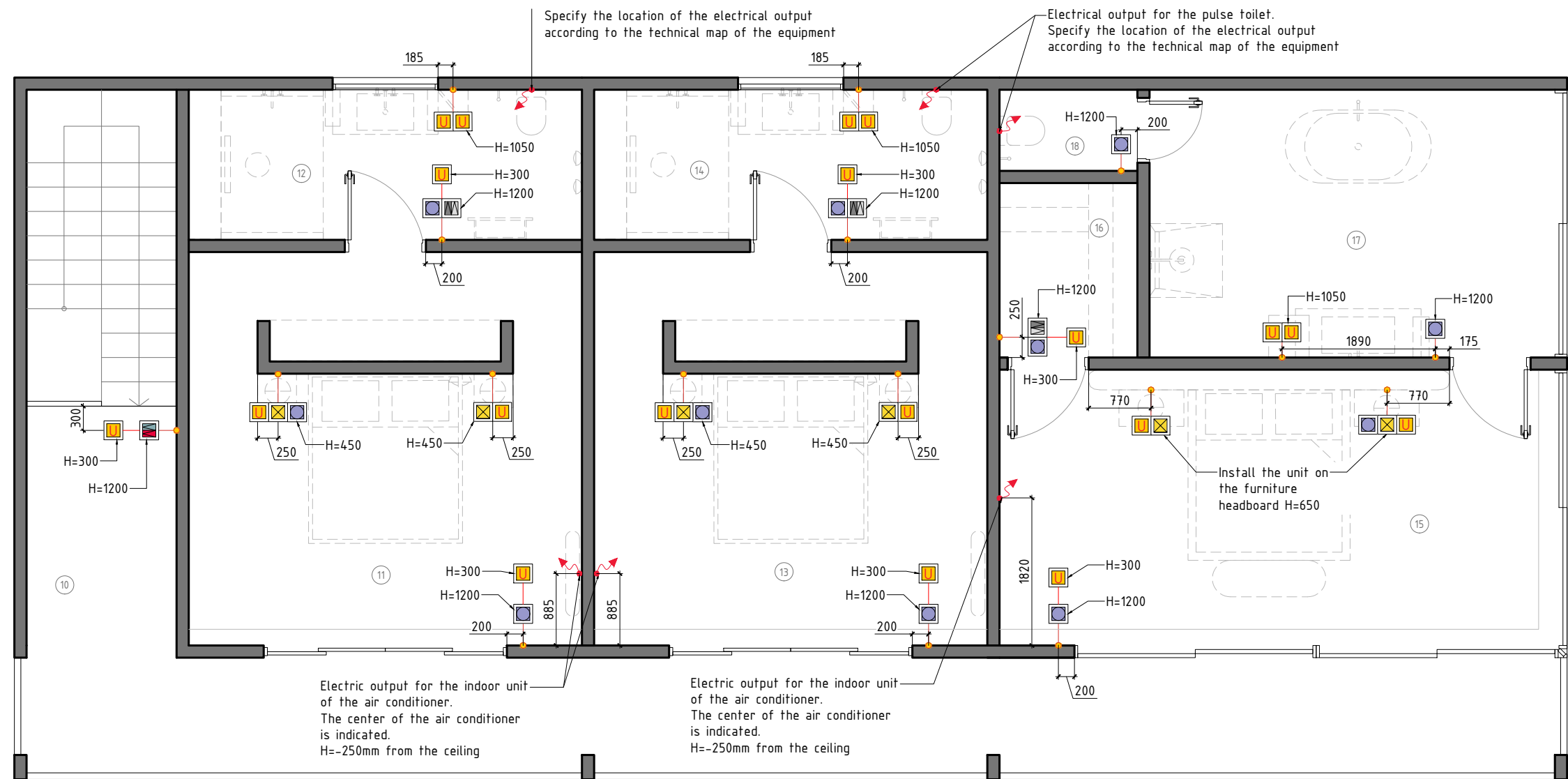
Explication		
N	Description	S,m2
10	Hall	32,30
11	Bedroom	23,50
12	Bathroom	8,95
13	Bedroom	23,50
14	Bathroom	8,95
15	Bedroom	23,15
16	Dressing room	3,65
17	Bathroom	16,50
18	Toilet	1,70
Total S 2nd floor		142.20

Notes.

1. Do not measure the dimensions in the drawing during work, use only the digital measurement value.
2. This drawing should be considered in conjunction with the corresponding structural, electrical and furniture drawings.
3. Specify all sizes in place! Notify the designer of any discrepancies with the actual dimensions or with the dimensions of the suppliers before accepting the drawings or completing the work.
4. The heights are indicated from the finished floor level.
5. All frames in any middle of the wall must be centered, taking into account the finishing appearance of future hidden door boxes!

Equipment statement		
Symbol	Description	Quantity
●	Built-in spot light	27
○	Overhead lamp	36
▲	Wall lamp	By visualization
◻▲	LED backlight. Electrical output 24V	
⊕	Floor/Table lamp. Switching on the lamp	By visualization
⊗	Forced ventilation ceiling diffuser	4

Architect	A.E. Lutaeva		Date
Architect	M.A.Mosievskaya	Lighting equipment binding plan 2nd floor	



Explication		
N	Description	S,m2
10	Hall	32,30
11	Bedroom	23,50
12	Bathroom	8,95
13	Bedroom	23,50
14	Bathroom	8,95
15	Bedroom	23,15
16	Dressing room	3,65
17	Bathroom	16,50
18	Toilet	1,70
Total S 2nd floor		142.20

Notes.

1. Do not measure the dimensions in the drawing during work, use only the digital measurement value.
2. This drawing should be considered in conjunction with the corresponding structural, electrical and furniture drawings.
3. Specify all sizes in place! Notify the designer of any discrepancies with the actual dimensions or with the dimensions of the suppliers before accepting the drawings or completing the work.
4. The heights are indicated from the finished floor level.
5. All frames in any middle of the wall must be centered, taking into account the finishing appearance of future hidden door boxes!

Equipment statement		
Symbol	Onucahue	Quantity
	Two-button switch	3
	Dimmer switch	11
	Two-button pass-through switch	1
	Electrical outlet 220V	
	Universal socket 220V	19
	Socket 220V + Type A + type C	6

Architect	A.E. Lutaeva		Date
Architect	M.A.Mosievskaya	Electrical plan 2nd floor	

GD & ASSOCIATES

Office

Made's Warung Unit #5, Seminyak, Bali 80361

Email

info@gillesdemunter.com

Whatsapp

+6281 9999 715 91

©PT SURGA TROPIS HIDUP. All Rights Reserved