

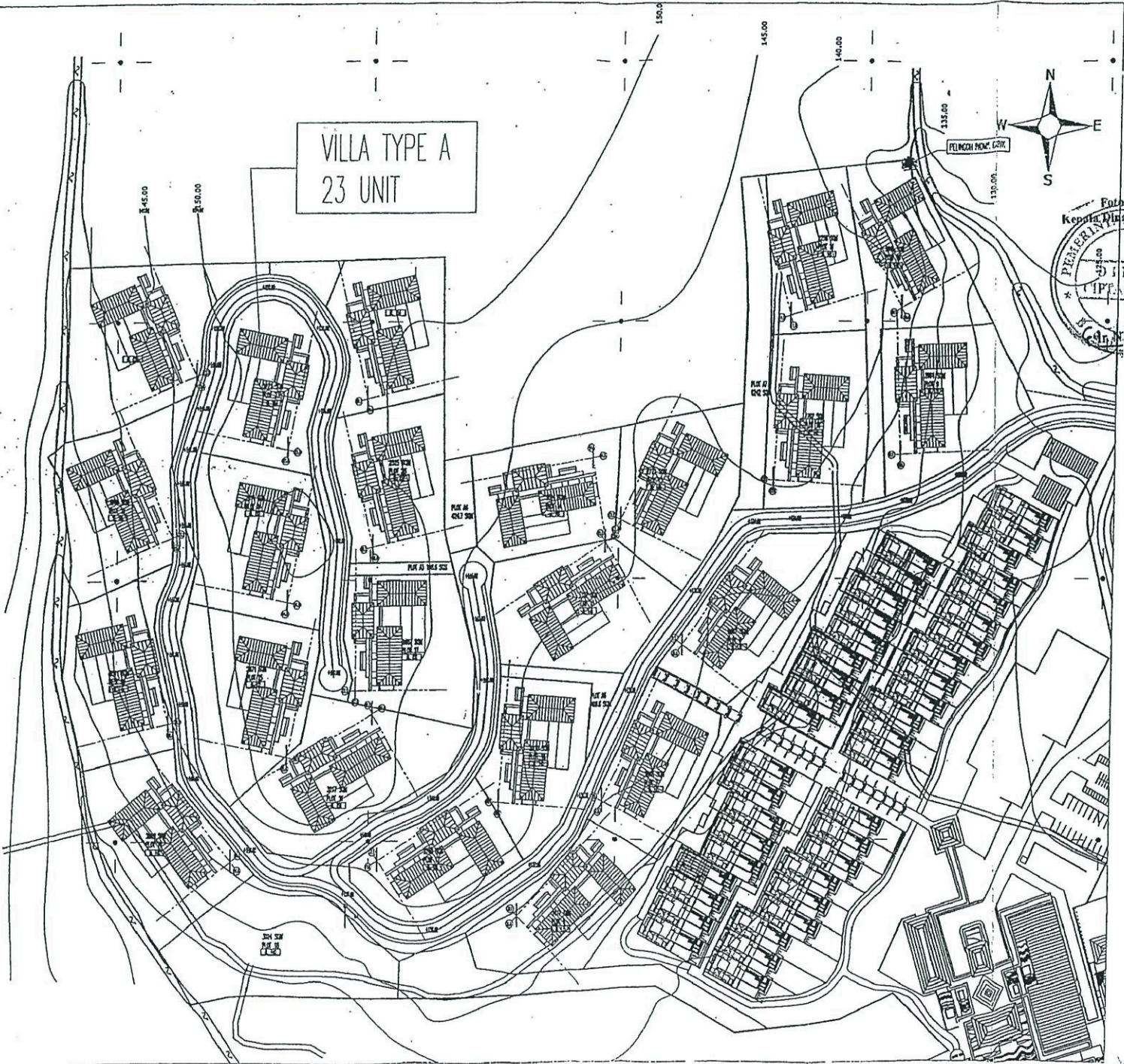
Foto Kepala
PERMENDIRIAN
No. 11

Gedung
Jalan
Kawasan

PANTAI GAU



VILLA TYPE A
23 UNIT



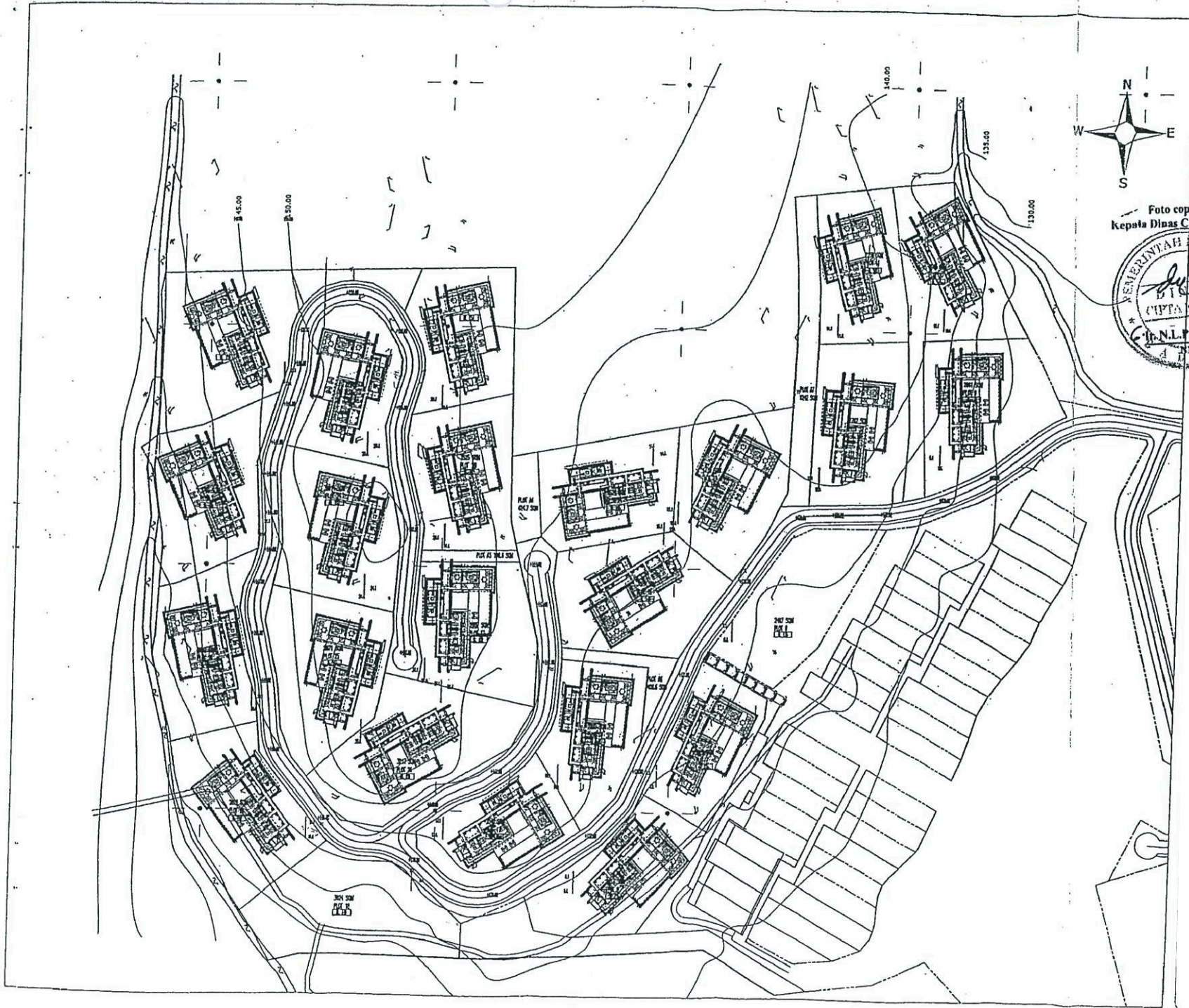






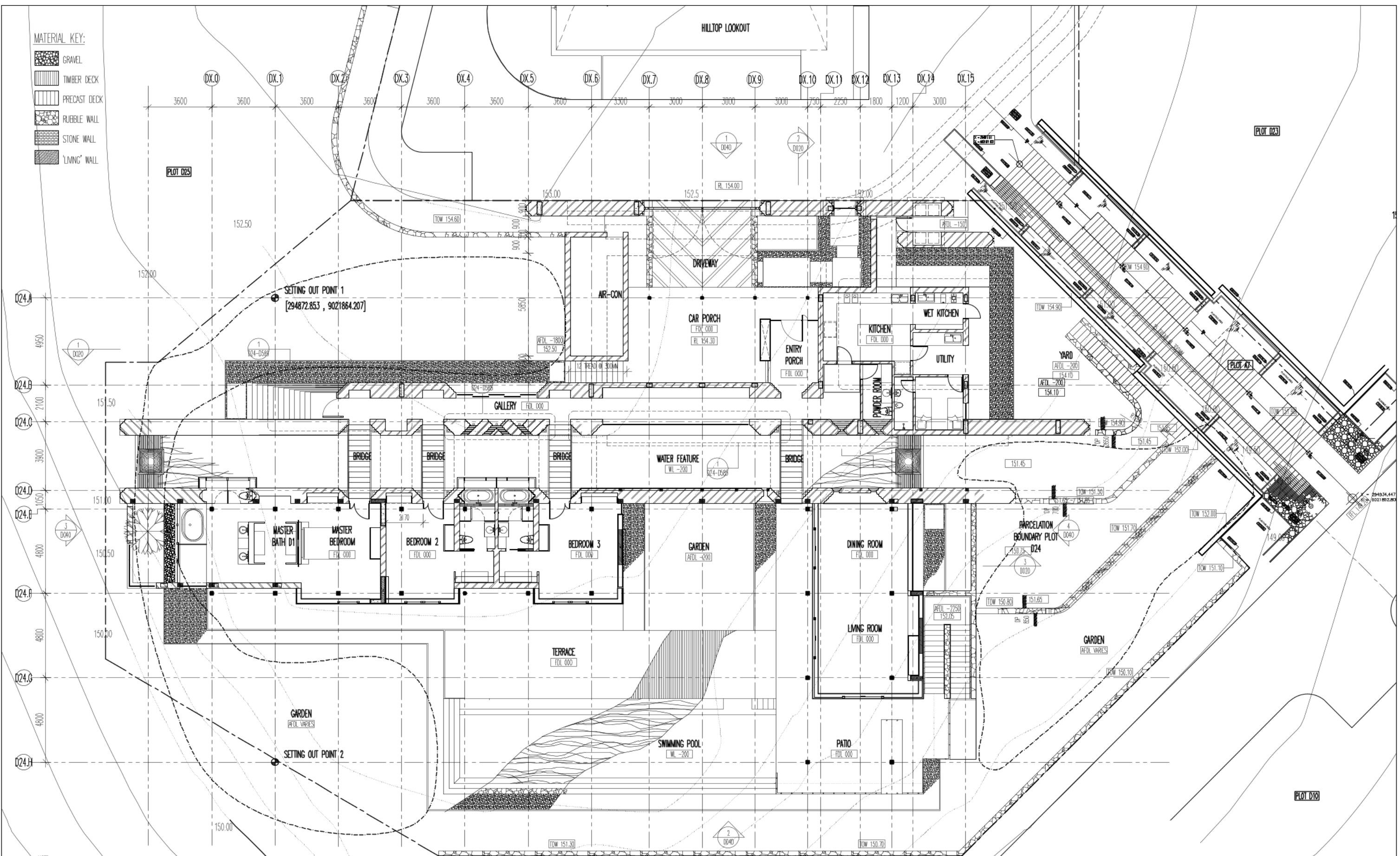


Foto copy
Kepala Dinas Cipta Karya



MATERIAL KEY:

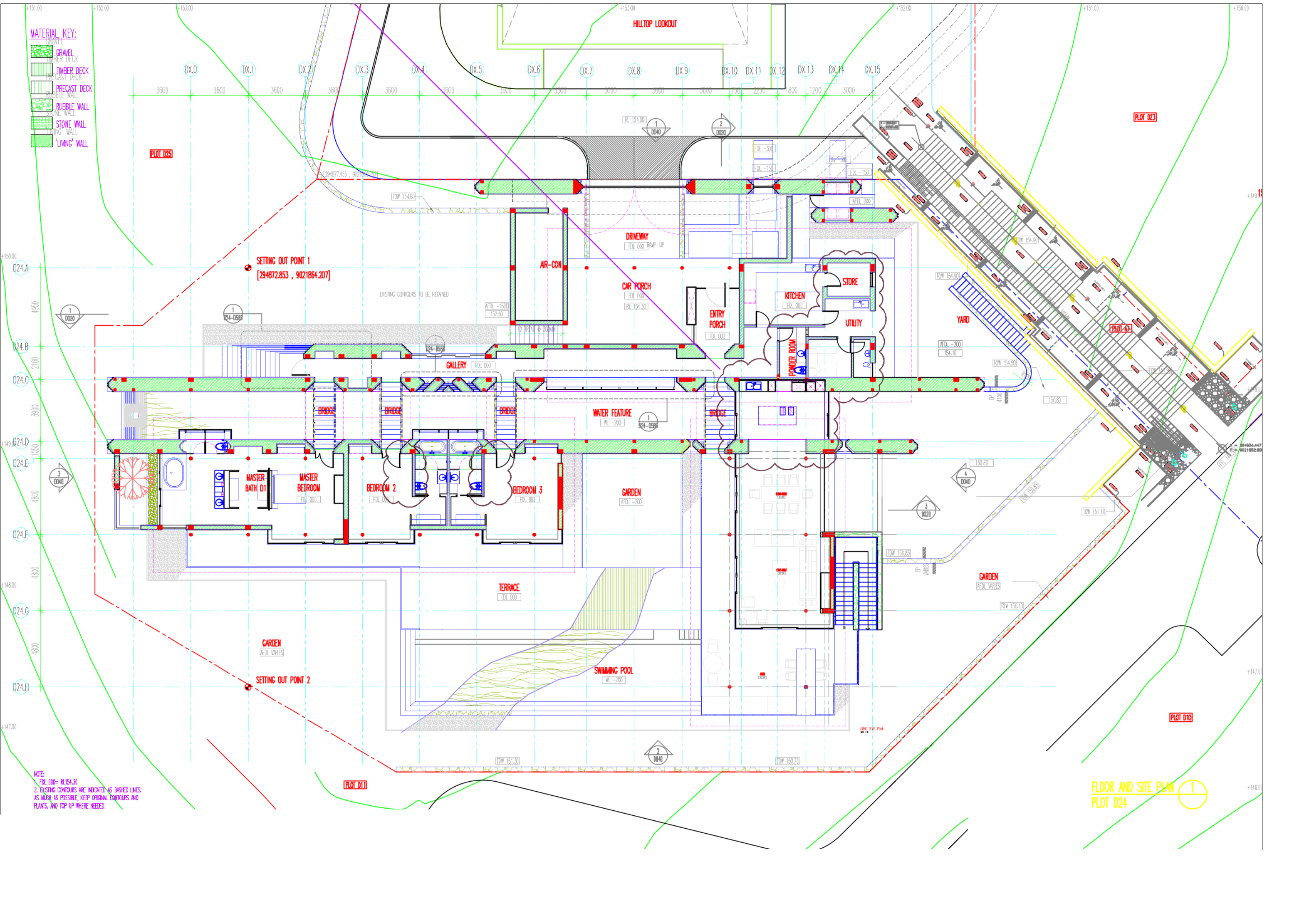
-  GRAVEL
-  TIMBER DECK
-  PRECAST DECK
-  RUBBLE WALL
-  STONE WALL
-  'LIVING' WALL



NOTE:
 1. FDL 000= RL154.30
 2. EXISTING CONTOURS ARE INDICATED AS DASHED LINES
 AS MUCH AS POSSIBLE, KEEP ORIGINAL CONTOURS AND
 PLANTS, AND TOP UP WHERE NEEDED.

FLOOR AND SITE PLAN 1
 PLOT D24

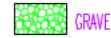


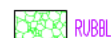


- MATERIAL KEY:**
- GRAVEL
 - TIMBER DECK
 - PRECAST DECK
 - RUBBLE WALL
 - STONE WALL
 - 'LIVING' WALL

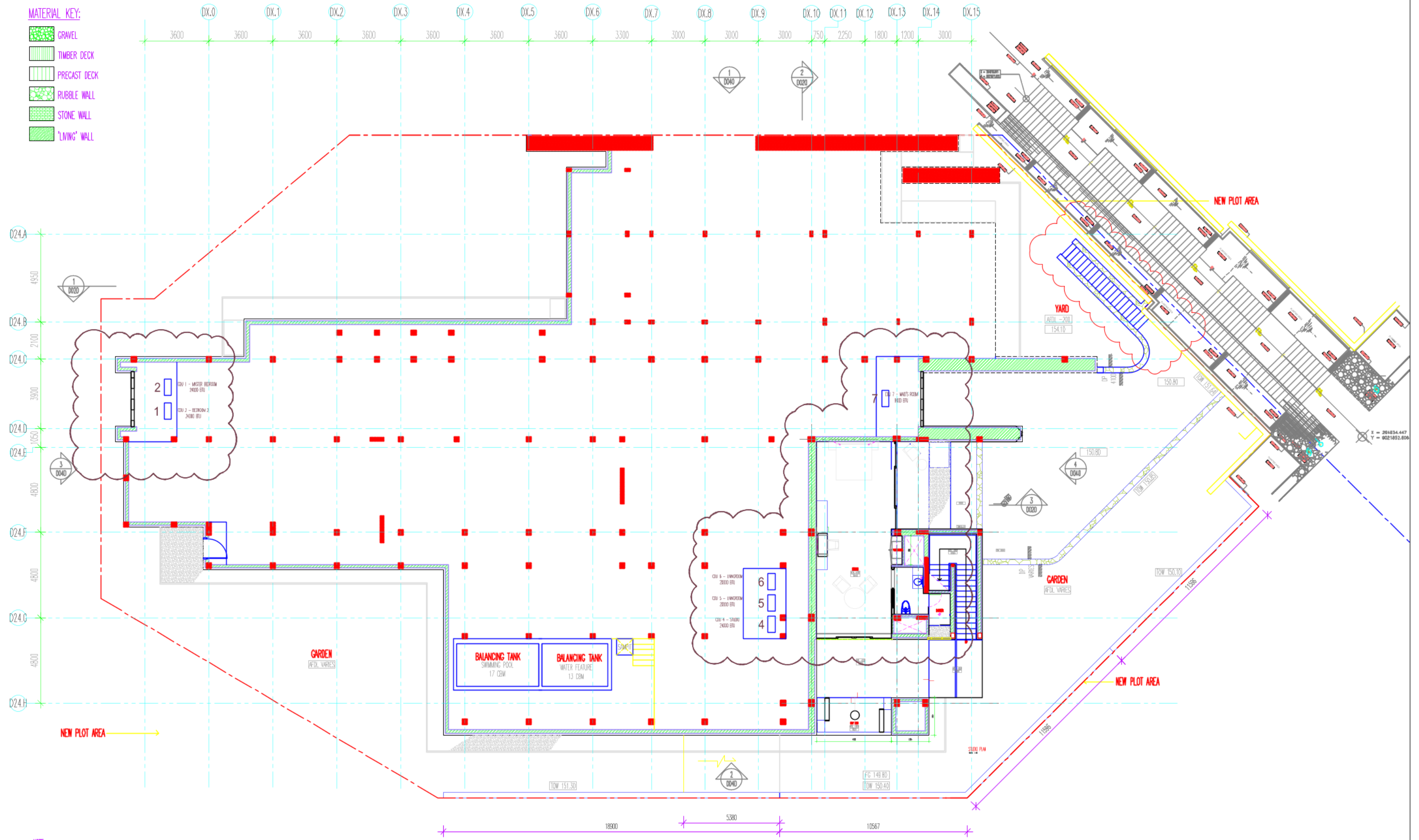


NOTE:
 1. F.O. 000= RL154.30
 2. EXISTING CONTOURS ARE INDICATED AS DASHED LINES
 AS MUCH AS POSSIBLE, KEEP ORIGINAL CONTOURS AND
 PLANS, AND TOP UP WHERE NEEDED.

FLOOR AND SITE PLAN 1
 PLOT D24

MATERIAL KEY:

-  GRAVEL
-  TIMBER DECK
-  PRECAST DECK
-  RUBBLE WALL
-  STONE WALL
-  "LIVING" WALL



NOTE:
 1. FOL 000= RL154.30
 2. EXISTING CONTOURS ARE INDICATED AS DASHED LINES.
 AS MUCH AS POSSIBLE, KEEP ORIGINAL CONTOURS AND
 PLANTS, AND TOP UP WHERE NEEDED.