

GD&ASSOCIATES

PROPERTIES LISTINGS | SOUTH BALI EXCLUSIVES | INDUSTRIAL LUXE VILLA (2BR)



INDUSTRIAL LUXE VILLA (2BR)

PECATU, SOUTH BALI

PRICE USD	PRICE IDR	OWNERSHIP	PERIOD
USD 500,000	IDR 7,750,000,000	Leasehold	29 years

BEDS / BATHS	LEVEL	YEAR BUILT
2 / 2.5	2	2024

LAND SIZE +/-	LIVING SIZE +/-	DESIGN
230 sqm 2.30 are	266 sqm 2.66 are	Industrial

CERTIFICATES	ZONING	VIEWS
Akta PBG/SLF	Tourism	Pool

Located at one of Bali's most wanted destinations on the Bukit, surrounded by the best surf spots Bali offers! Bingin Beach, Padang Padang, Dreamland, and Bluepoint Beach are just minutes away.

Tucked away in a quiet, rural neighborhood with many restaurants(Gooseberry, Cashew Tree), cafes, and entertainment spots well within reach.

Designed by Utara, a Bali-based design studio for architecture, interior, and landscape. Active and creative designing since 2000 and has been commissioned to do several projects in Bali and overseas.

The aesthetic for interiors has been popularized by many urban designers, featuring metal finishing, exposed brick, and tons of raw wood to give it that unfinished look. These core design elements come together to form a modern, edgy aesthetic. While industrial interiors might look great, they often appear cold, uncomfortable, and practical; however, by merging the core elements with pieces of luxury, a whole new dimension to your home can be achieved. The industrial-luxe design highlights a grown-up version of the plain industrial aesthetic and highlights style and sophistication while still leaving plenty of edges.

The 2-level property comprises 2 bedrooms on a plot of 230 m2 of land with a living space of 266 m2.

*Garden | Home Office | Private Parking | Storage Room |
Swimming Pool*

GD&ASSOCIATES by Gilles Demunter®

©2021 PT SURGA TROPIS HIDUP. ALL RIGHTS RESERVED

www.gillesdemunter.com | info@gillesdemunter.com | +(62)819-99-971-591
GD Headquarters @ Made's Warung Unit #5, Jalan Raya Seminyak,
Seminyak, Kecamatan Kuta, Kabupaten Badung, Bali 80361, Indonesia.

GD&ASSOCIATES



OVERVIEW

REGULAR
OWNERSHIP: LEASEHOLD
STATUS: BRAND NEW
DESIGN: INDUSTRIAL
LAND SIZE: 230 sqm / 2.30 are
LIVING SIZE: 266 sqm / 2.66 are
LEVEL: 2
BED / BATH: 2 / 2.5
VIEWS: POOL
FURNISHING: FULLY-FURNISHED
INCLUDE STAFF: NO
PAYMENT TERM: NO
CERTIFICATION: AKTA, PBG/SLF
ZONING: TOURISM

AMENITIES

- ✓ GARDEN
- ✓ HOME OFFICE
- ✓ PRIVATE PARKING
- ✓ STORAGE ROOM
- ✓ SWIMMING POOL

OTHERS

- ✓ SWIMMING POOL
- ✓ OFFICE ROOM
- ✓ ENCLOSED LIVING & AMP, DINING AREA
- ✓ FULLY EQUIPPED MODERN KITCHEN
- ✓ LANDSCAPE TROPICAL GARDEN
- ✓ PRIVATE PARKING

NEARBY

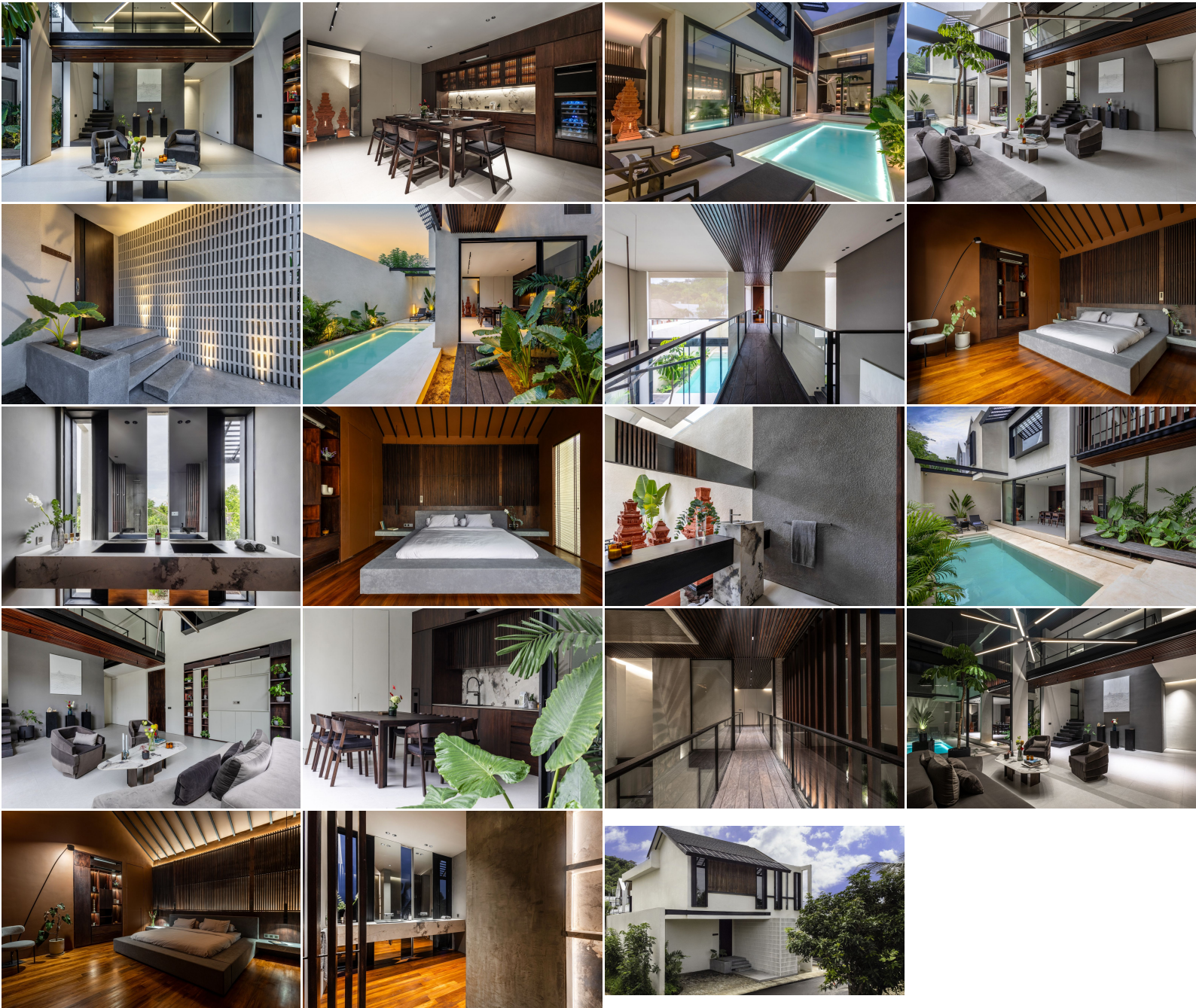
SAVAYA
GOOSEBERRY

GD&ASSOCIATES by Gilles Demunter®

©2021 PT SURGA TROPIS HIDUP. ALL RIGHTS RESERVED

www.gillesdemunter.com | info@gillesdemunter.com | +(62)819-99-971-591
GD Headquarters @ Made's Warung Unit #5, Jalan Raya Seminyak,
Seminyak, Kecamatan Kuta, Kabupaten Badung, Bali 80361, Indonesia.

GD&ASSOCIATES



GD&ASSOCIATES *by Gilles Demunter*®

©2021 PT SURGA TROPIS HIDUP. ALL RIGHTS RESERVED

www.gillesdemunter.com | info@gillesdemunter.com | +(62)819-99-971-591

GD Headquarters @ Made's Warung Unit #5, Jalan Raya Seminyak, Seminyak, Kecamatan Kuta, Kabupaten Badung, Bali 80361, Indonesia.