

GD&ASSOCIATES

PROPERTIES LISTINGS | BANGLI EXCLUSIVES | UNIQUE VILLA WITH MOUNTAIN VIEW



UNIQUE VILLA WITH MOUNTAIN VIEW KINTAMANI, BANGLI

PRICE USD	PRICE IDR	OWNERSHIP	PERIOD
USD 380,000	IDR 5,942,000,000	Leasehold	30 years

BEDS / BATHS	LEVEL	YEAR BUILT
1 / 1	1	2025

LAND SIZE +/-	LIVING SIZE +/-	DESIGN
150 sqm 1.50 are	150 sqm 1.50 are	Modern

CERTIFICATES	ZONING	VIEWS
Akta PBG/SLF		Batur Mountain

**Key handover 1st quarter of 2025*

**3 units available*

**Ongoing construction*

Located in the crater of an ancient stratovolcano in Bali, the complex stands at the highest point in Kintamani, providing breathtaking views above the clouds. It is one of Bali island's most underrated areas, with volcanoes, hot springs, fresh mountain air, and lake views.

The complex is situated at an elevation of 1540 meters above sea level in a low-light area, providing an incredible view of the stars at night. A renowned Russian architect designed the project with glass roofs to emphasize this feature.

Since the villa's roof is partially made of glass, they have developed a unique kinetic roof-slider that operates on a silent electric motor and can be closed with the push of a button. The roof panels are solid six-meter glass panels seamlessly joined together without frames.

These are not just villas with stunning designs - they are unique, collectible pieces of art. This is the new landmark of Bali. Real estate that will appreciate over time and generate significant passive income for its new owners.

The 1-level villas comprise 1 bedroom on a plot of 150 m2 of land with a living space of 150 m2. Each villa is equipped with a sauna, while pools are not included. This is because it is quite cold at an elevation of 1540 meters above sea level. The nighttime air temperature drops to +6°C.

GD&ASSOCIATES by Gilles Demunter®

©2021 PT SURGA TROPIS HIDUP. ALL RIGHTS RESERVED

www.gillesdemunter.com | info@gillesdemunter.com | +(62)819-99-971-591
GD Headquarters @ Made's Warung Unit #5, Jalan Raya Seminyak,
Seminyak, Kecamatan Kuta, Kabupaten Badung, Bali 80361, Indonesia.

GD&ASSOCIATES



OVERVIEW

REGULAR

OWNERSHIP: LEASEHOLD

STATUS: OFF-PLAN PROPERTY

DESIGN: MODERN

LAND SIZE: 150 sqm / 1.50 are

LIVING SIZE: 150 sqm / 1.50 are

LEVEL: 1

BED / BATH: 1 / 1.0

VIEWS: BATUR MOUNTAIN

FURNISHING: FULLY-FURNISHED

INCLUDE STAFF: NO

PAYMENT TERM: NO

CERTIFICATION: AKTA, PBG/SLF

AMENITIES

OTHERS

- ✓ SAUNA
- ✓ ULTRA MODERN DESIGN
- ✓ UNSPOILED VIEW

NEARBY

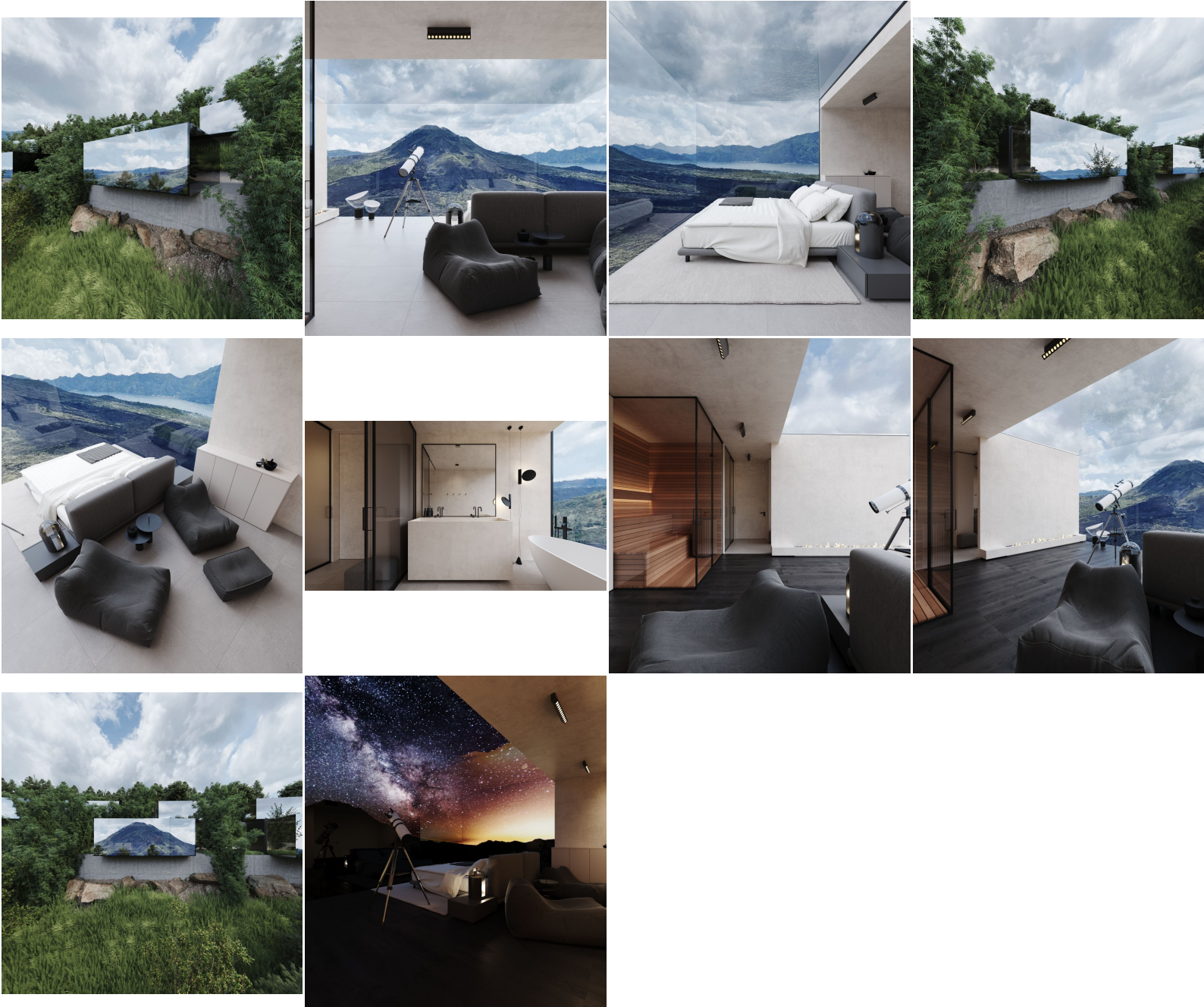
GD&ASSOCIATES *by Gilles Demunter*®

©2021 PT SURGA TROPIS HIDUP. ALL RIGHTS RESERVED

www.gillesdemunter.com | info@gillesdemunter.com | +(62)819-99-971-591

GD Headquarters @ Made's Warung Unit #5, Jalan Raya Seminyak, Seminyak, Kecamatan Kuta, Kabupaten Badung, Bali 80361, Indonesia.

GD&ASSOCIATES



GD&ASSOCIATES *by Gilles Demunter*®

©2021 PT SURGA TROPIS HIDUP. ALL RIGHTS RESERVED

www.gillesdemunter.com | info@gillesdemunter.com | +(62)819-99-971-591
GD Headquarters @ Made's Warung Unit #5, Jalan Raya Seminyak,
Seminyak, Kecamatan Kuta, Kabupaten Badung, Bali 80361, Indonesia.